

\$1,650,000 - N/a, Delray Beach

MLS® #RX-10787076

\$1,650,000

Bedroom, Bathroom, 1,138 sqft
Commercial on 0 Acres

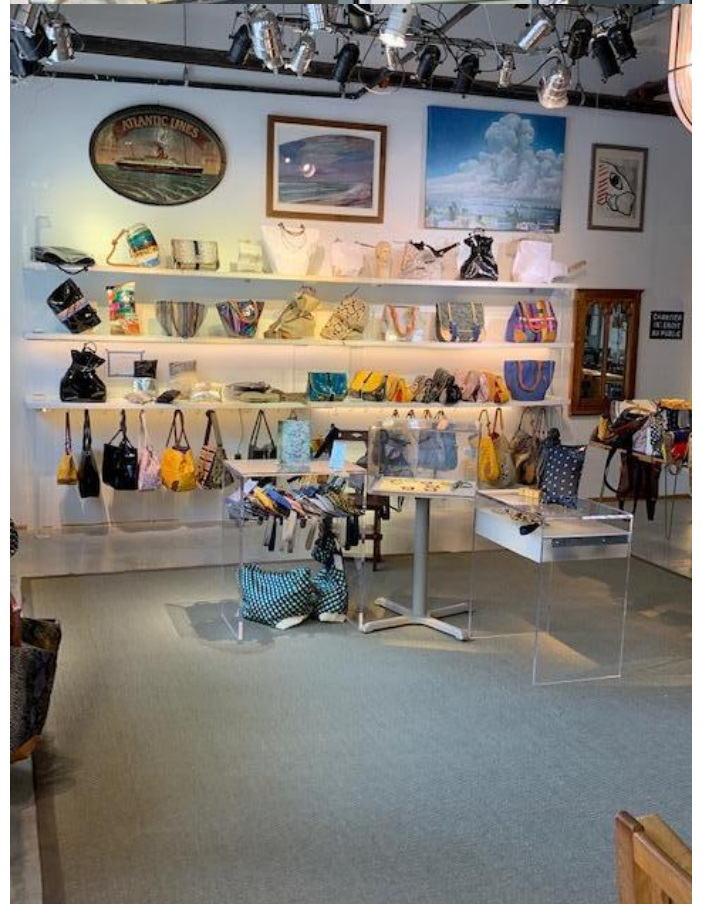
ASTOR CONDO, Delray Beach, FL

For Sale! Own your own Store! Commercial Condo Downtown Delray Beach! Large, Pristine, 1,138 +/- SF Ground Floor, Condo Space Now Available! Property Features include, Large Windows throughout the Space, an abundance of Natural Light, High Ceilings with Exposed Beams, Hurricane impact Doors & Windows, Polished Concrete Floor, 1 Bathroom, 3- Reserved Garage Parking Spaces in Building & Public Parking Located Adjacent to the Property! Located 1 block north of Atlantic Avenue on Pineapple Grove Way and NE 1st Street, A1/2 Block from The Ray Hotel & The Rosewater Rooftop Restaurant in the Heart of Downtown! Owner has access to Rooftop Pool & Cabana. Zoned for Retail Space *Monthly Condo Fee \$489.00*No warranty or representation, expressed or implied is made as to the accuracy of the information contained herein and same is subject to errors, omissions, change of price, rental or other conditions, withdrawal without notice, and to any special listing conditions, imposed by our principals.

Built in 2008

Essential Information

MLS® #	RX-10787076
Price	\$1,650,000
Taxes	8864.00



Square Footage	1,138
Acres	0.00
Year Built	2008
Type	Commercial
Sub-Type	Retail
Style	Commercial, Retail
Status	Active

Community Information

Address	N/a
Subdivision	ASTOR CONDO
City	Delray Beach
State	FL
Zip Code	33444

Amenities

Utilities	Other
-----------	-------

Interior

Appliances	None
Heating	Central
Cooling	Central
# of Stories	1

Exterior

Lot Description	Retail Space
Roof	Other

Additional Information

Date Listed	March 28th, 2022
Days on Market	796
Zoning	CBD

Listing Details

Listing Office	Coastal Commercial Group, LLC
----------------	-------------------------------



All listings featuring the BMLS logo are provided by BeachesMLS, Inc. This information is not verified for authenticity or accuracy and is not guaranteed. Copyright ©2024 BeachesMLS, Inc.

Listing information last updated on June 1st, 2024 at 10:19pm EDT